

# HOUSE & GARDEN

MARCH 2006  
£3.30

THE DEFINITIVE GUIDE TO STYLISH LIVING

**DESIGN  
IDEAS  
FOR WALLS**  
MODERN  
PANELLING  
& NEW PAPERS

**A TASTE OF  
MOROCCO**  
EASY RECIPES  
FOR WINTER  
ENTERTAINING

**LIFESTYLE**  
LADY HELEN  
TAYLOR

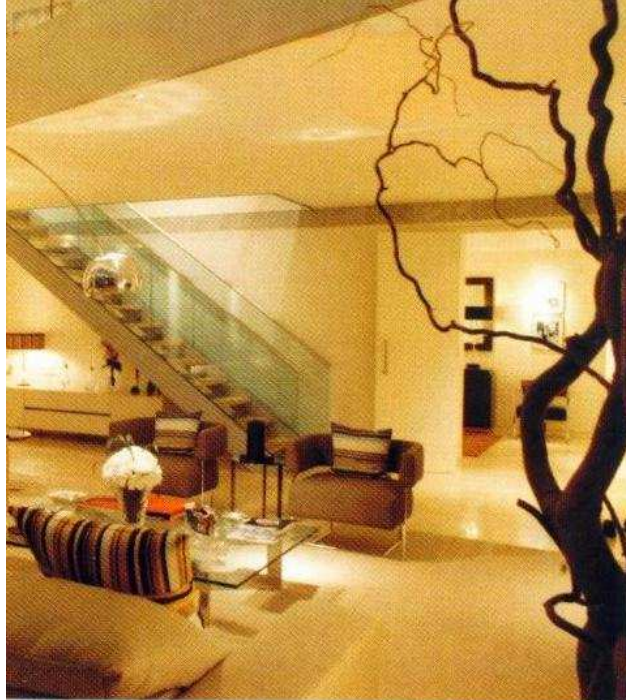
**TOP  
DECORATORS**

THE HOUSE &  
GARDEN  
EXCLUSIVE  
DIRECTORY OF

**LEADING INTERIOR DESIGNERS**

# 100





### **Juliette Byrne**

'Nothing is too much trouble' is Juliette Byrne's soothing motto to clients. Having trained in interior design at Chelsea School of Art, and with over 15 years in the business, she prides herself on finishing jobs on time, and going the extra mile to perfect the design. Projects increasingly feature bespoke modern furniture pieces, such as a wall-hung cabinet to house an LCD television. Her style is wide ranging, from classic to modern, but deliberately so. 'Design is dictated by the client's aesthetic sensibility and the architecture,' she points out. Current projects reflect that mix: she has just finished the decoration of a modern penthouse in Norman Foster's Albion Riverside development, and has an ongoing Grade II-listed country-house commission, which she's working on with fellow decorator Henrietta Holroyd. To achieve the best mix of skills, Juliette often teams up with designer Catherine Pawson, who was trained with Bill Bennette and Sibyl Colefax & John Fowler. The pair has just completed the total refurbishment of a six-floor town house in Knightsbridge. *Juliette Byrne, Juliette Byrne Interior Design Associates, 1 Munro Terrace, Cheyne Walk, SW10 (tel: 020-7352 1553, e-mail: office@juliettebyrne.com, website: www.juliettebyrne.com)*

